

**OUR INSTITUTIONS:  
A RECORD OF THEIR OBJECTS AND WORK.**

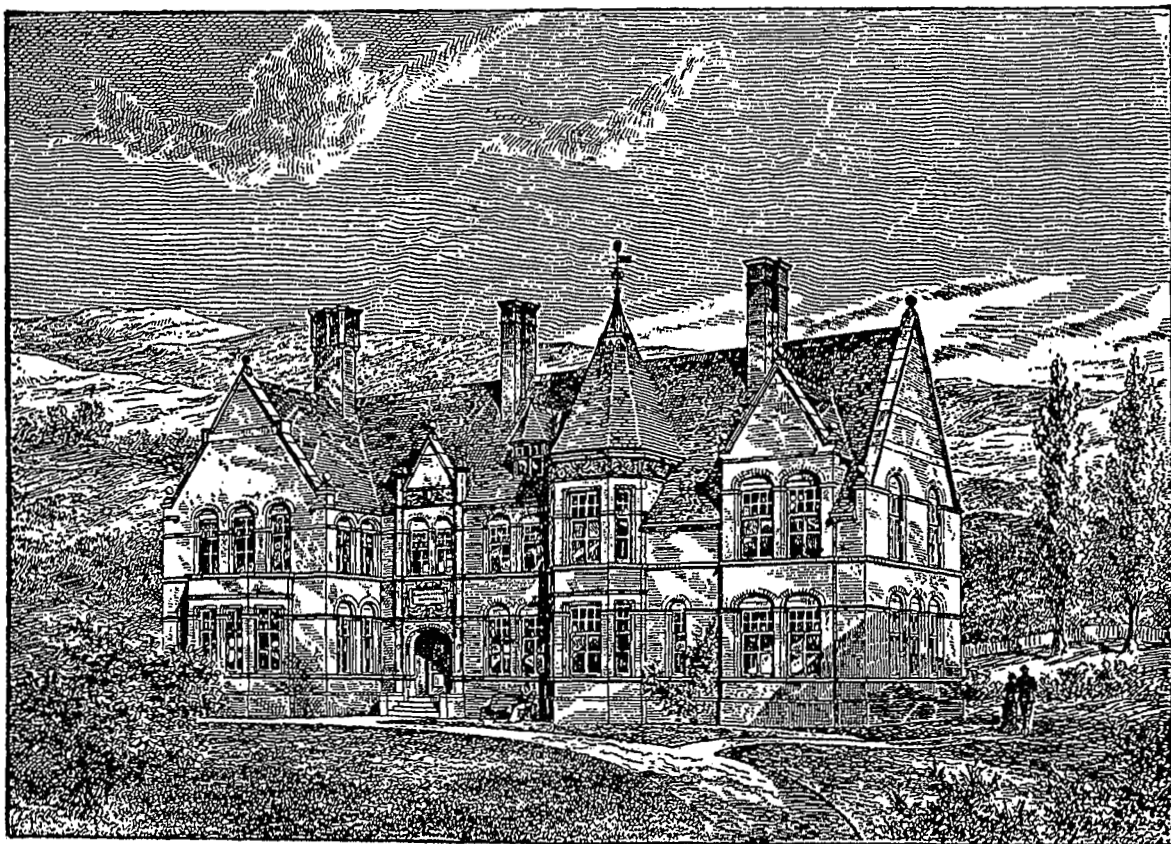
THE CHILDREN'S CONVALESCENT HOME AT  
WEST KIRBY, CHESHIRE.

**T**HIS Home began originally, by the kindness of a few friends, in a small house at Hoylake in 1881, where only seven children could be accommodated at once, but was transferred in July, 1888, to the present beautiful and

Lancashire. We hope to extend further by-and-by. Patients pay seven shillings per week in advance, except—

- (1) Children from Hospitals, who pay five shillings per week.
- (2) Children nominated by subscribers, who pay five shillings per week.
- (3) Children nominated to appropriated cots, who are free.

Subscribers have, for every guinea subscribed, the nomination of one child for three weeks at five shillings per week. Subscribers of fifteen



suitable building at West Kirby, on the shores of the Dee—Kingsley's Dee, about which he wrote his touching little song of "Mary, call the cattle home across the sands o' Dee."

The present building is free of debt, and can accommodate forty children, though, up to the present, only about twenty-five have been taken, but it only requires to be made more widely known, to have both plenty of children, and plenty of funds always in hand. It is for the benefit of poor children in the counties of Cheshire and

guineas have a cot appropriated, to which they may nominate a succession of children free, during the year for which such subscription is paid. And very attractive do these little cots, with their scarlet coverlets, look, with their brass plates bearing such names as "The Dove Cot," "Welcome," "Beehive," "Rest," and "Cosy Corner."

Half-an-hour from Liverpool by train, the busy city seems left far behind as the engine puffs out from Hoylake Station, past the golf-links, with the red-coated golfers, and the fields with daisies, and

[previous page](#)

[next page](#)