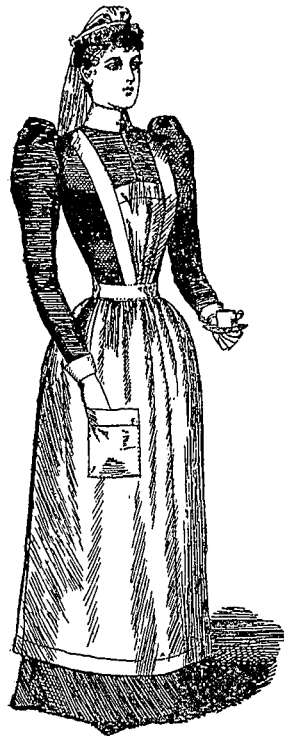


GARROULD, EDGWARE RD., HYDE PARK, W.

Costumier and Fashionable Coat Maker, FANCY STORE, ETC.



Estimates Given for all kinds of HOSPITAL UNIFORMS.

Garrould's Special Hospital Apron (as per sketch), as supplied to London Hospitals, is made of stout linen finished cloth; full size; without seam and lock stitch. 2/6 each (samples by post, 3d. extra).

The "Sister Grace" Collar (as per Sketch), 3/3 the Half Dozen. Narrower width, 2/3 the Half Dozen.

The "Sister Grace" Cuffs (as per sketch), 4/3 the Half Dozen. Narrower width, 3/3 the Half Dozen.

Garrould's Special "Sister Victoria" Cap, New Design, made of Washing Cambric, 1/9 each.

Garrould's Special "Sister Grace" Cap. Thoroughly recommended for washing, 1/5 each. Illustrations of these Caps, post free.

Garrould's Noted Hospital Cloak. New Shape. Made of All-Wool Melton Cloth, thoroughly shrunk. Recommended for Warmth and Durability. 30/- each.

Cloaks sent on approval, or Illustration and pattern of Cloth, post free.

All Silk Gossamer Veiling, in Black, Navy, Grey, or Brown. 27in., 2/6; 36in., 3/3.

Caps, Aprons, or other Requisites made to any design in a few days.

E. & R. GARROULD, 150, 152, 154, 156, 158; and 128, 130,
EDGWARE ROAD; 54, 55, and 58,
QUEEN STREET; 24, 25, and 26, NUTFORD PLACE, HYDE PARK,
LONDON, W.
Telegraphic Address: "GARROULD, LONDON."



STANDARD MALT EXTRACT

Plain and with Cod Liver Oil.

THE attention of the Nursing profession is specially invited to these preparations, which are now growing more and more in favour amongst medical men both in London and the provinces. They are extensively used by the leading Chest and other Hospitals. A trial will at once prove that they are far more powerful in results than any other known Malt Extract preparations, as the Standard Malt Extract contains many times more **Diastase**—diastase being acknowledged by all competent authorities to be the most important constituent of Malt Extract. This Extract also contains "Maltose," which is rich in flesh-forming and bone-producing properties; and the

soluble phosphates of lime, soda, and potash, naturally present in the grain, serve as a valuable tonic to the nervous system. A Sample will be sent to any Nurse or Doctor on receipt of a post-card, and special prices quoted.

The STANDARD MALT EXTRACT Co., 23, Billiter Street, London, E.C.

THE WAY WE HELP NURSES.

We now make it a rule to supply Nurses with our Preparations at the same rate as to the trade, which gives them a discount on our goods of over **25** per cent. Nurses must write direct and enclose their card, and we will send them samples gratis, and a Special Price List to Nurses.

We beg to call special attention to our

HARTMANN'S ACCOUCHEMENT SHEETS & HARTMANN'S WOOD WOOL DIAPERS, which are rapidly coming into use everywhere. They are a great boon to Patient, Nurse, and Physician in attendance. They are antiseptic, clean and comfortable, and diminish the risk of puerperal fever.

The fact that our Preparations are in use in all the Leading Hospitals in the United Kingdom is the best proof of their value.

For **FREE SAMPLES** and **REDUCED PRICE LIST TO NURSES** address

The Manageress The Sanitary Wood Wool Co., Ltd., 26, Thavies Inn, Holborn Circus, London.

[previous page](#)

[next page](#)