

Letters to the Editor.

(Notes, Queries, &c.)

Whilst cordially inviting communications upon all subjects for these columns, we wish it to be distinctly understood that we do not IN ANY WAY hold ourselves responsible for the opinions expressed by our correspondents.

CONVALESCENT NURSING.

To the Editor of "The Nursing Record."

SIR,—Will you allow me, through the medium of your paper, to ask if among your readers there are any Nurses who would care for the post of Assistant Nurse, at the new 'Hospital Convalescent Home,' shortly to be opened at Swanley. There are 120 beds, and the staff will consist of two charge Nurses and six assistant Nurses. The salary for assistant Nurses is £20 a year, with uniform, and a return ticket to London twice in the month. They must have had at least a year's training in hospital work. I feel that there are many women, who either because they are not strong enough, or because they are not fitted for actual Hospital work, may be glad to find employment of this kind.—I am, your obedient servant,

FLORENCE SMEDLEY, Matron.

Hospital Convalescent Home, Parkwood, Swanley, Kent.

April 24th, 1893.

Replies to Correspondents.

Nurse Spanton.—We have referred your question to our solicitors, and will print their reply next week.

Miss Rebecca Goodfellow.—There is no Registration of Midwives now in force.

Elsie V.—Many thanks. We will use the cutting as soon as possible, and should be glad if you will send us any further correspondence which takes place on the subject.

Miss Howard.—Your facts are quite familiar to us; and your friend is only suffering as many of her predecessors have suffered. It is not the slightest use appealing to the Committee. They will only brow-beat her if she sees them privately, and flatly deny everything if the matter is raised publicly. Her best course is to send in a formal statement in writing to the Committee, and to send a copy of it to the leading London papers. Several editors are very indignant on the matter, but if the Nurses will not help themselves by stating these scandals, no one else can help them.

Miss Bond.—We are continually receiving letters of inquiry on the subject of Home Hospitals. It is rather difficult to give advice. If you have plenty of capital and a wide circle of medical friends and supporters, you have a chance of doing well, if you manage the Home on liberal lines, making the NURSING of the patients the paramount consideration. So many of these Institutions are nothing more than expensive lodging-houses, where a very limited supply of Nurses are kept, and where the Manager is an unprofessional person. These places cause distrust in the minds of the public, and bring great discredit on Nursing Homes in general.

LENTILINE BISCUITS.

(Marriott's Patent).

SILVER MEDAL, LONDON, 1892.

Highly recommended for Professional and Business Men, Travellers, Invalids, and for Rearing Growing Children.

BRAIN FOOD.
Bone and Muscle Former.

Tins at 1/-, 2/6, and 5/4, or at 8d. per lb.; small size tin Post free on receipt of P.O.O. or Stamps for 1/4, of the Patentees,

E. MARRIOTT & Co., Hastings.

THE SANITARY RECORD

Is full of information useful to Householders and all interested in maintaining PUBLIC, PERSONAL & SOCIAL HEALTH.

Published on the 1st and 15th of each Month, at 60, St. Martin's Lane, W.C.

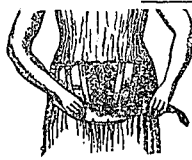
Annual Subscription, including postage throughout the World, 10/-

Single Copy, 6d.; post free, 7d.

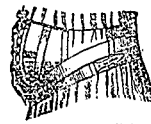
THE DIARY, price 2/6, presented to Annual Subscribers.

TEUFEL BELTS

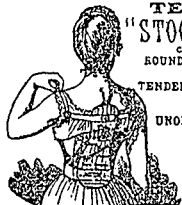
AND SPECIALITIES FOR THE MEDICAL PROFESSION.



DURING PREGNANCY.

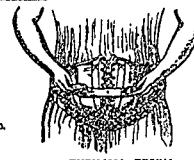


AFTER CONFINEMENT.

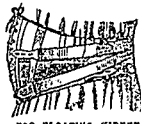


TEUFEL "STOOP-CURE" CORRECTS ROUND SHOULDERS, AND TENDENCY TO STOOPING

UNOBSERVABLE. COMFORTABLE. EFFICIENT



FOR UMBILICAL HERNIA



FOR FLOATING KIDNEY



LADIES' "SAFE-GUARD" BANDAGE PREVENTS CHAFING AND CHILL.

COMFORTABLE. EFFICIENT. CLEANLY.



TRADE MARK.

SOLD BY SURGICAL INSTRUMENT MAKERS, CHEMISTS, LADIES' OUTFITTERS, &c For ILLUSTRATED CATALOGUE Apply to TEUFEL REMEDIAL APPLIANCES CO. LONDON. Sample Depot 456, WEST STRAND, W.C. Wholesale Warehouse 61, MOOR LANE, E.C. Ladies' Department in charge of Mrs. Cummings. Teufel Goods can be obtained of: Dr. JAEGER'S Co., 14, S & 4, Princes St., Cavendish Square, W. SWEANS & WELLS, Lilliputian Warehouse, 197, Regent St., W. W. WHITELEY, Westbourne Grove, W. CIVIL SERVICE CO-OPERATIVE SOCIETY, 25, Baymarket, S.W. SPIERS & FOND'S STORES, 14, Coates, 4th Street, E.C.

[previous page](#)

[next page](#)