

To the Editor of "the Nursing Record."

MADAM,—May I be permitted to call the attention of your readers to two directions included in the Rules of the Obstetrical Society, published by you in your issue of Jan. 20th.

1st. Under Hand Feeding, we find that "two-thirds pure and fresh milk, with one-third the quantity of hot water added to it, the whole being slightly sweetened, should be used."

At what period is this meal to be given? Does it apply to the whole period of infant life or not? If this is the correct interpretation—and I fail to see how, in the absence of any limitations, any other can be put upon the rule—we need not, I think, go further for a full explanation of the frequent failure to rear by cow's milk.

2nd. Is not, I would ask, a "tablespoonful of lime-water" a somewhat free and unnecessary allowance?

From these two illustrations it must, I think, be clear to most of those who are interested in the subject that, as thus written, these Rules are most imperfect in so far as Hand-Feeding is concerned.

You will, perhaps, excuse my pointing out an error in the printing of one passage in my paper, viz.: "Sweeten to new milk" is printed "Sweeten the new milk." This occurs under "Strength of the Meals."—I am, your obedient servant,

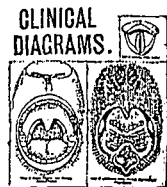
LEWIS MARSHALL.

42, The Rope Walk, Nottingham.

## Comments and Replies.

### REPLIES.

One of our readers writes:—"One of the reasons why she subscribed to the NURSING RECORD was on account of the Post-Card Examinations, as the leading answer was well worth keeping. Nurse C— is very disappointed that the answers are no longer given."



### ACCURATELY DRAWN.

Mouth in Front; Ditto, back, Nares to Larynx from above. These three, adult life size, on each leaf, specially adapted for clearly marking the diseased parts at every stage in Diphtheria, Granular Pharyngitis, Laryngitis, Tonsillitis, &c.  
50 leaves, pierced, gummied in book, post free, 1s.

THE RECORD PRESS, LIMITED, 376, STRAND, LONDON, W.C.

## PRUDENTIAL ASSURANCE COMPANY, LTD.

Holborn Bars, London, E.C.

FOUNDED 1848.

Invested Funds ... £18,000,000.

[We shall be glad to hear from others if these P. C. Exams. were liked. If we receive answers in the affirmative in sufficient numbers, we will with pleasure recommence the department, reserving a column for the purpose the first issue of every month.]

Miss Annie L. Preedy, Ealing.—We are very pleased to receive your appreciative letter. The NURSING RECORD will become more and more interesting as Nurses learn to appreciate the value of Press representation, and support their own Journal by expressing their own opinions in it, and by encouraging their friends to read it.

Miss May Kenwick, Leynton.—We shall publish a letter next week from Miss McVitie, from India, on the subject upon which you require information. Miss Loch, The Cottage, Bishopsgate, Englefield Green, would, I feel sure, be glad to give you information, if you write at once, as she is on the eve of departure for India.

### LETTERS RECEIVED.

- A. Mr. S. F. Adair, Dublin; Mrs. Roberts-Austen, London (with enclosure).
- B. Miss Bostock, Tooting.
- C. Miss Cannings, London.
- G. Mrs. Gordon, London (with enclosure).
- H. Miss Hartopp, Leicester; Miss Hull, London.
- K. Miss May Kenwick, Leynton.
- L. Miss H. Lee, Highgate.
- M. Mr. R. D. Macdonell; Miss Masters, Dublin; Miss K. McIntosh, Dundee; Miss Lena Mollett, Budapest; Dr. Lewis Marshall, Nottingham (with enclosure).
- N. Mrs. Noel, London (with enclosure).
- P. Miss Peters, Mentone; Miss A. Preedy, Ealing.
- R. Miss R. Rogers, Brighton (with enclosure); Mrs. Rose, London (with enclosure).
- S. Miss Stevens, Douglas, Isle of Man; Miss A. Severn, Bristol; Miss G. Sparrow, Nottingham.
- T. Miss Toller, Plymouth; Miss S. Tomkins, Paris.
- W. Mr. Charles Ward, London; Miss Waters, Cape Town; Miss Amy Watson, Cincinnati.

## The Record Art Gallery.

PORTRAIT OF H.R.H. PRINCESS CHRISTIAN, FIRST PRESIDENT OF THE ROYAL BRITISH NURSES' ASSOCIATION.

One Shilling, Post Free.

"THEN AND NOW"; OR, THE NURSE OF '43 AND THE NURSE OF '93. Pictorially set forth.

One Shilling, Post Free.

The above are packed flat and not rolled.

A SERIES OF ORIGINAL ETCHINGS OF REPRESENTATIVE LONDON HOSPITALS. Specially executed for the Proprietors of the "Nursing Record" by Miss Lillian C. Smythe.

The following have already been executed or arranged for:—

St. Bartholomew's.	Westminster.
Guy's.	Middlesex.
St. Thomas's.	St. George's

- A. 50 Proof Copies (large size) on Japanese Vellum, signed by the Artist. One Guinea each.
- B. 100 Unsigned Copies on India Paper. Half Guinea each.
- C. Quarto size, on ordinary Paper. Two Shillings and Sixpence each.

As a limited number of copies only will be issued, immediate application should be made.

Neat Artistic Frames, suitable for A. and B., 10s. each; for C., 5s. each. The Etchings and Frames will be securely packed and delivered Carriage Free.

THE RECORD PRESS, LIMITED, 376, Strand, London, W.C.

[previous page](#)

[next page](#)