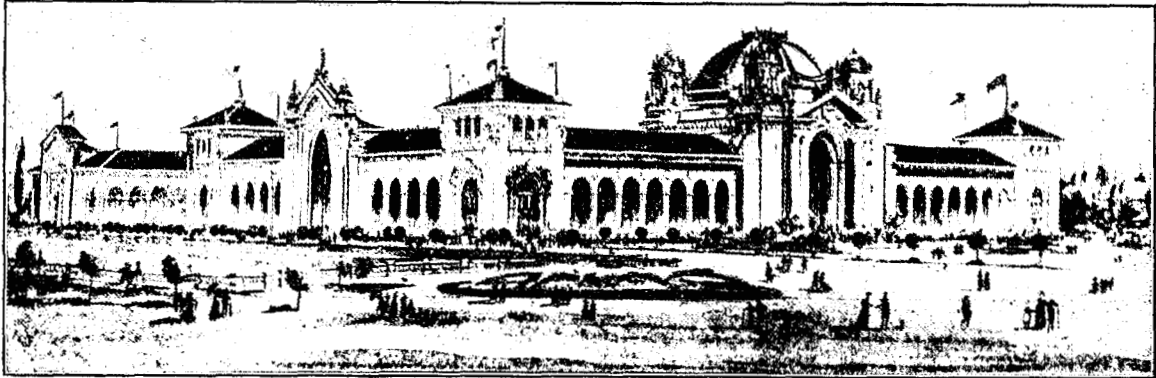


of water connecting the lake with North Bay he will get the first glimpse of the New York State building, standing amid the forest trees on the shores of the bay. Continuing north he will come presently to the Approach and to the Fore Court, and crossing the Triumphal Bridge, which spans the east and west of the mirror

Machinery Buildings, and the State Houses—all too numerous to mention.

THE LIBERAL ARTS.

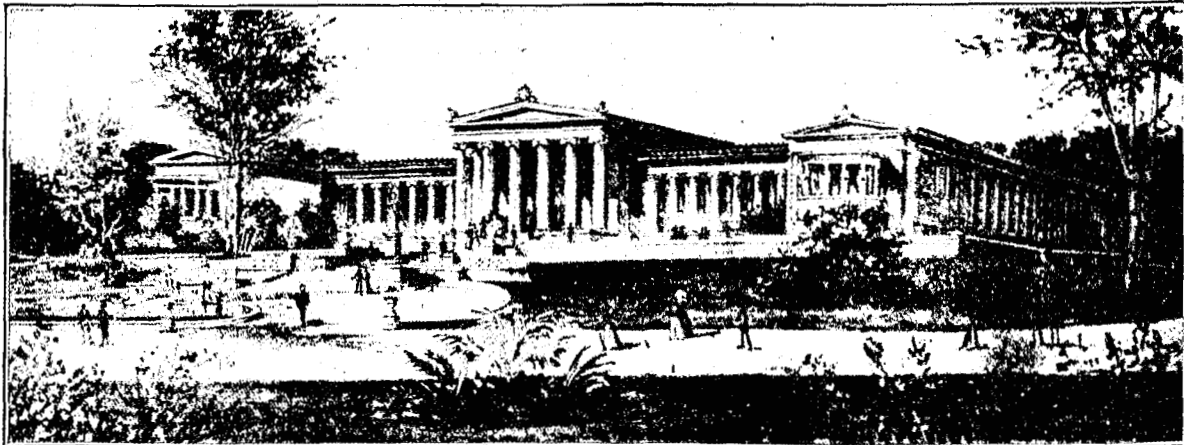
The exhibits to be displayed in the Manufactures and Liberal Arts Building will show the highest attainment of Western civilization in



MANUFACTURES AND LIBERAL ARTS BUILDING.

lakes, he will be within the Esplanade. The buildings first seen upon the extreme right are the Government group, consisting of three large buildings. On the far left is a similar group, consisting of the Horticulture, Graphic Arts, and Forestry and Mines Buildings. Crossing the Esplanade he will approach the Ethnology

artistic skill and handicraft in all the useful arts and in the broad fields of education, literature, libraries, physical science, the drama, architecture, civil engineering, hygiene, sanitation, medicine, surgery, nursing, charities and other elements of progress. The finest products of the mills, factories and laboratories will be exhibited here



ALBRIGHT ART GALLERY.

Building on the right and the Temple of Music on the left. These mark the junction of the Court of Fountains with the Esplanade. On the right and left again are two subordinate courts, one known as the Court of Cypresses, and the other as the Court of Lilies. On the east and west are the Manufactures, Liberal Arts, and

in splendid array and will be seen under the most favourable conditions.

The ornamental character of the Manufactures and Liberal Arts Building will command admiration. Its dimensions are 350 by 500 feet. In the centre of the building is a spacious court opening to the sky, with a central pool and

[previous page](#)

[next page](#)