

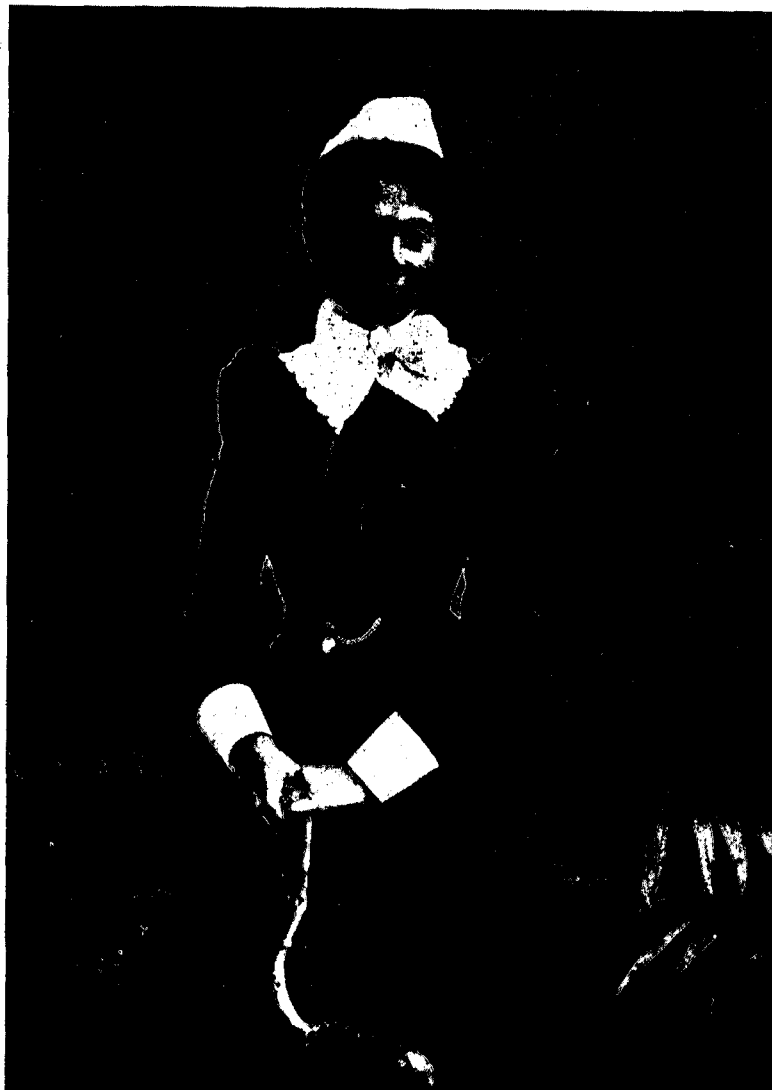
Nurses of Note.

MISS MARY E. RAY.

The New Matron of King's College Hospital.

It is always satisfactory, when the Matronship of a large training school is vacant, if the candidate is selected from amongst those who

tion that the choice of the authorities of King's College Hospital has fallen upon Miss Mary E. Ray, a lady trained in its school which attained a high reputation during the able superintendence of Miss Monk, who will thus carry on its many excellent traditions. As we report elsewhere, Miss Ray, after completing



MISS MARY E. RAY.

Sister-Matron King's College Hospital.

have been trained in the school. Sometimes it may be necessary to go outside, but, when possible, it is natural and fitting that preferment should be given to those who have brought credit on the institution where they received their training. It is therefore matter for congratula-

her three years' training, held the position of Ward Sister for four years. She then had experience as Assistant Superintendent at the General Infirmary, Leeds, for three years, and has been Matron of the County Hospital, Lincoln, for the last seven years.

[previous page](#)

[next page](#)