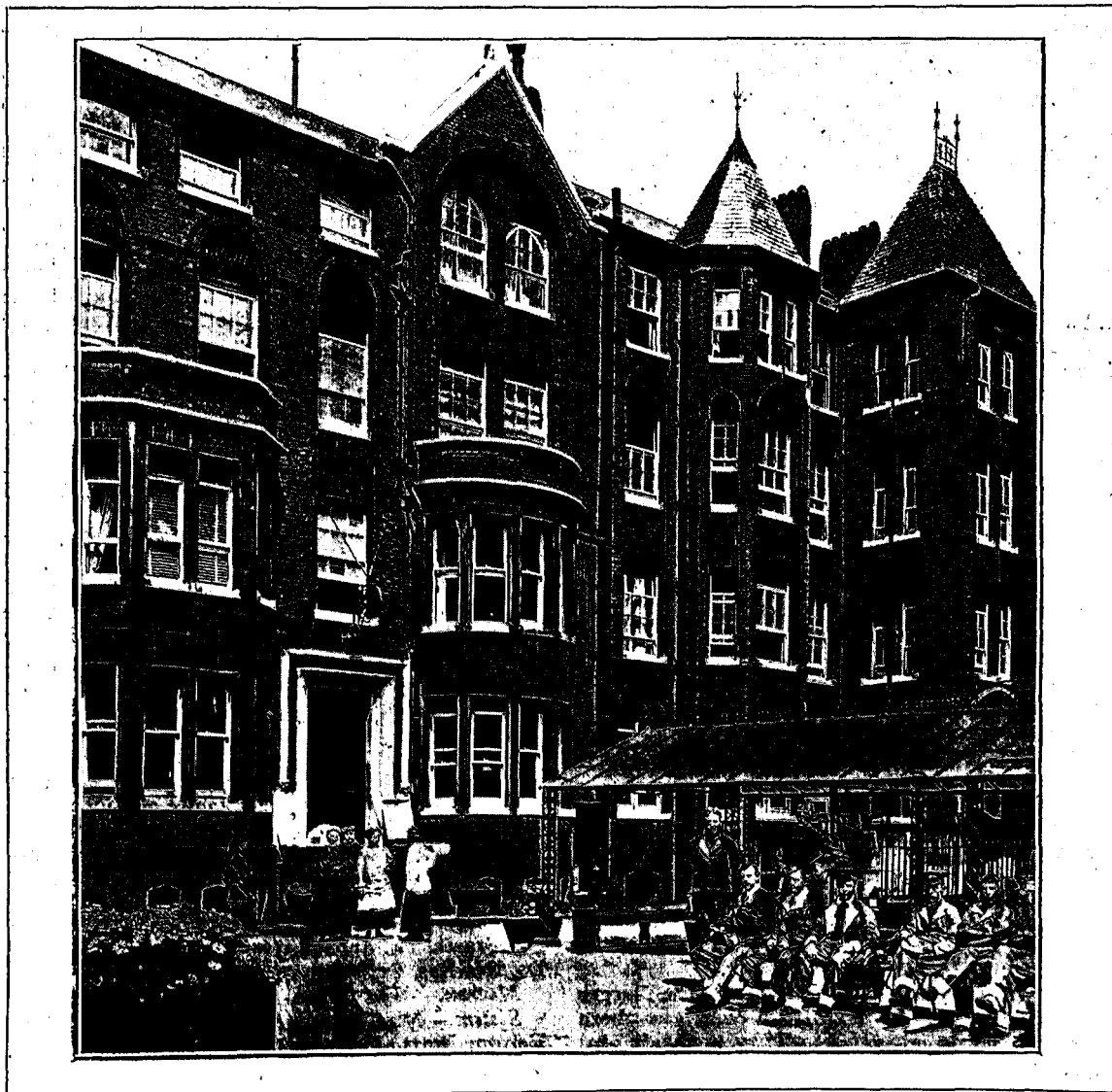


THE MILITARY HOSPITAL, ENDELL STREET, W.C.

Those who visit the Military Hospital recently opened in Endell Street, London, W.C., in charge of Dr. Louisa Garrett Anderson, and Dr. Flora Murray, must at once be profoundly aware of a

work is beyond all praise, but the dominant control has been male, and such management is apt to deal effectively with essentials, whereas women, while laying equal stress on efficiency, bring to bear upon the problem their genius for home making, in which they are past masters, while in 6,000 years men have never yet achieved the art. On entering the gates a courteous woman orderly



THE MILITARY HOSPITAL, ENDELL STREET, LONDON, W.C.
MISS HALE (MATRON), WOMEN ORDERLIES AND PATIENTS.

subtle difference between this and any other military hospital they have ever visited. Seeking for causes, one realises that it is because it is woman's kingdom, and woman's kingdom in a sphere which has hitherto been supposed to be man's exclusively. Woman's influence has of course been felt through the Nursing Sisters, whose

in khaki coat and skirt, with blue shoulder straps and close fitting cap and veil, takes one's business in hand and finds the Matron, Miss Grace R. Hale, lent to the hospital by the New Hospital for Women, and considering that a short time ago the building was an unused workhouse, and now it is a spick and span, cheerful, comfortable and

[previous page](#)

[next page](#)