

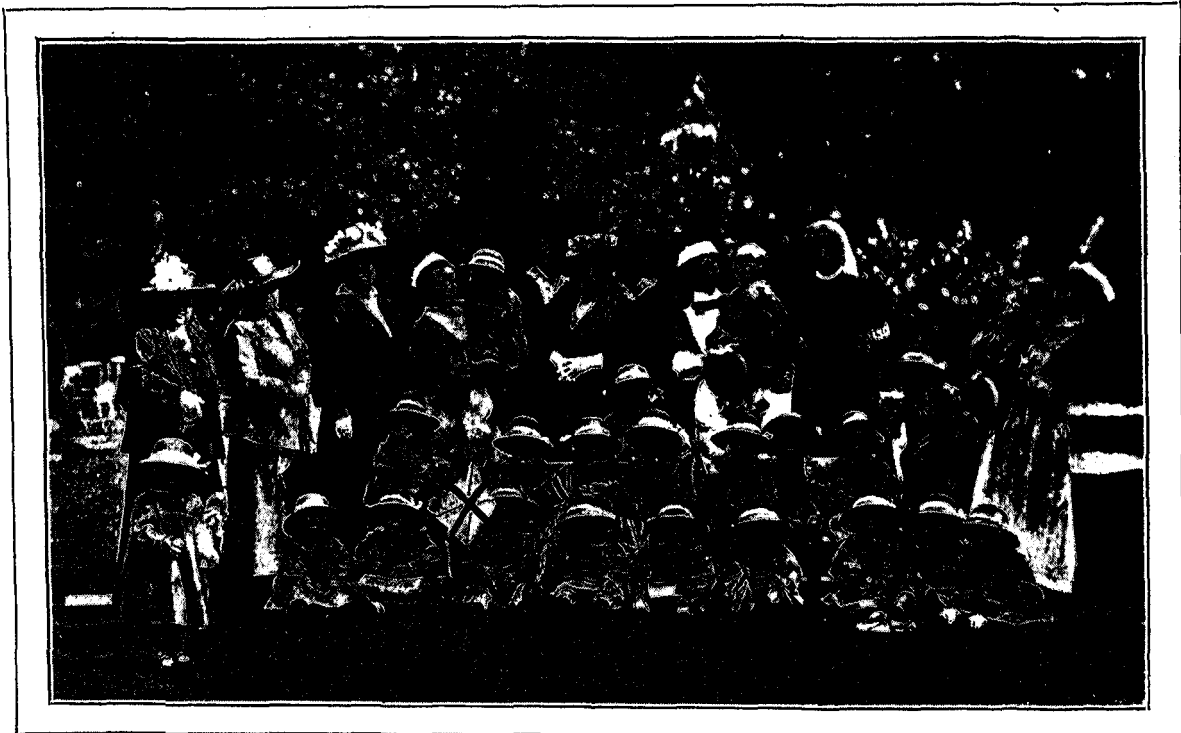
A SUMMER HOLIDAY CRECHE.

It was a happy idea of the National Society of Day Nurseries, 4, Sydney Terrace, Fulham Road, S.W., to establish a holiday crèche at Conewood, Camberley, where little children from the London crèches can be sent for a fortnight or three weeks to spend their days in the open air among the health-giving Surrey pines.

The Chairman of the Local Committee is Mrs. Francis Brenton, Colonel Sir Henry McCallum is Hon. Secretary and Treasurer, Dr. Law Adams and Dr. H. L. Lewis Hon. Physicians, and Miss Alice Mary Mason Matron. Miss Mason was trained at the Poplar and Stepney Sick Asylum, and has had additional experience in the care of children at the Hospital for Children in the

while a number of the former have been named by donors of three guineas. The dining room is furnished with tables and chairs of a size to suit the children whose ages are between two and five, while in the adjoining room are little stretchers upon which they all take a midday nap.

London children are friendly little people, and, as will be seen in our illustration, are very content with their surroundings. They make a pretty picture on the lawn in their blue or pink overalls, and little white hats with ribbon band. That ribbon seems to be the joy of their hearts; infantile as they are, they appreciate its value to the full. Amongst the attractions may be mentioned a sandpit to play in, and chickens and rabbits to feed. It is all very homelike, happy and healthy, but one does not like to think of the



SLUM CHILDREN AT THE SUMMER-HOLIDAY CRÈCHE, CAMBERLEY,
ESTABLISHED BY THE NATIONAL SOCIETY OF DAY NURSERIES.

Harrow Road, W., and at St. Mary's Nursery Training College, Belsize Lane, N.W.

The Committee could scarcely have found a more ideal home for their experiment than Conewood, which has been lent them by Mr. William Watson, of Ascot, for three months. It is a substantially built house, flooded with sunshine, with rooms well adapted for the purposes for which they are used, and at the back is a garden with spacious lawns, on which the children can play to their heart's content, while if it is wet there is the big playroom on the ground floor of the house.

The neighbourhood has opened its heart, and cots and other necessary furniture have been lent,

day when the children return to the slums. Perhaps—who knows?—the love of a country life in after years may date, for some of these children, from these days of their babyhood, and Conewood play a not unimportant part in attracting the slum-dwellers "back to the land."

The Queen opened the new South London Hospital for Women, at Clapham Common, on Tuesday last. Her Majesty had a great reception, and amongst those presented to her was the Matron, Miss Jones Pearce. The purses presented contained £1,500. With other gifts, £25,000 was contributed.

[previous page](#)

[next page](#)