

nursing for their own patients, and have ignored the question of arranging for a comprehensive, all-round training for the nurse. Now, however, that affiliated schemes of training are being approved by the General Nursing Council, the opportunity presents itself for some general hospital to secure affiliation with the West End Hospital, and thus enlarge its own opportunities and increase its training facilities and the advantages it can offer its probationers in a most valuable direction.

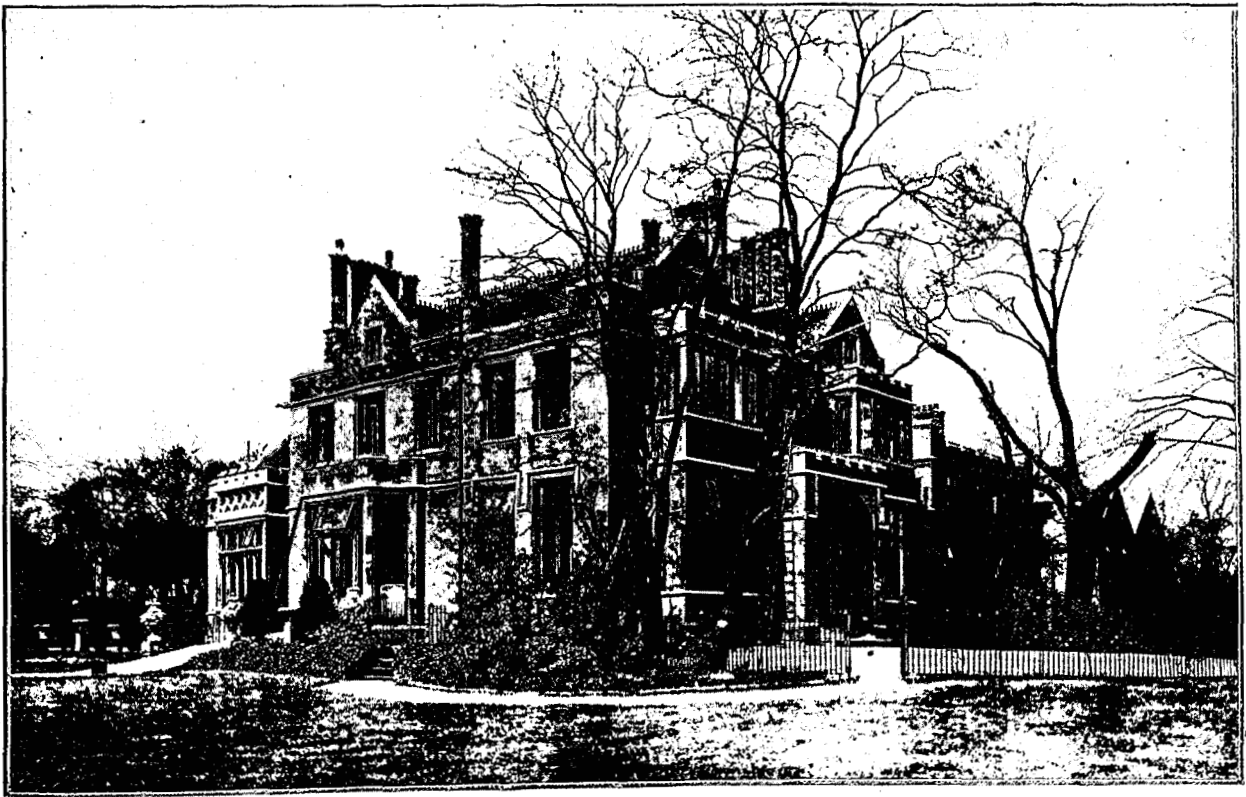
There is an added interest in the establishment of the West End Hospital in its present quarters, inasmuch as St. Katharine's Lodge was the Lodge of the Warden of the "Royal Chapel of St. Katharine in the Regent Park" nearby, and the nursing staff live in houses in the precincts, at one time the headquarters of Queen Victoria's Jubilee Institute for Nurses.

#### MEDICAL OFFICERS OF HEALTH VISIT OXO FACTORY.

A number of Medical Officers of Health of London Boroughs recently spent an afternoon at the Oxo Factory. The processes of manufacture of the Oxo products were viewed and explained, and during the visit a demonstration of the way in which the Company's "Oxoid" Gland preparations are physiologically standardised, was given. A cinema film of life on the Oxo Cattle Farms was also shown.

At the close of the visit Dr. D. L. Thomas, Medical Officer of Health for the Borough of Stepney, expressed the thanks of those present to Oxo Limited for an interesting afternoon.

Speaking as a Medical Officer of Health on behalf of himself and his colleagues, he stated he was gratified and



WEST END HOSPITAL FOR NERVOUS DISEASES.—IN-PATIENTS' DEPARTMENT, REGENT'S PARK, N.W.

The Rev. Severne A. A. Majendie, M.A., Warden of the Royal Chapel, in an extremely interesting booklet, published by A. S. Mowbray & Co., Ltd., 28, Margaret Street, Oxford Circus, traces the story of this unique bit of Nursing History.

It relates how Queen Matilda, wife of Stephen, founded the Hospital in memory of her two children, and that it was re-founded by Queen Eleanor, wife of Henry III. Those who are interested in English history, as well as Nursing History, should obtain a copy of this booklet, which contains a copy of Queen Eleanor's Charter, granted in 1273, and much of interest besides.

We note in the last Annual Report that the In-patients payments amount to over £2,982, and the Out-patients to over £2,527, demonstrating that its work is appreciated by those whom it serves.

impressed with the high standard of hygienic conditions existing in the Factory. It appeared that every precaution was taken to ensure the maintenance of the highest standard of quality as regards Oxo and the other food products manufactured by the Company, and at the same time it was clear that no trouble was spared in looking after the comfort and happiness of the workers producing these products.

We understand that further visits are being arranged, and any of our readers desirous of availing themselves of these opportunities should communicate with Oxo Limited, Thames House, London, E.C.4.

The Governors of the Middlesex Hospital have decided to rebuild the institution at a cost of approximately £500,000. It is hoped to launch the reconstruction fund early in May.

[previous page](#)

[next page](#)