

NEW UNIFORMS FOR STATE REGISTERED NURSES.

On September 16, the General Nursing Council for England and Wales invited the Press and representatives of the firms approved by the Council as uniform makers, to a display of the new uniforms approved for wear by State Registered Nurses, and State Enrolled Assistant Nurses. This gathering presided over by Miss C. Alexander, S.R.N., Vice-Chairman of the Council, and Chairman of the

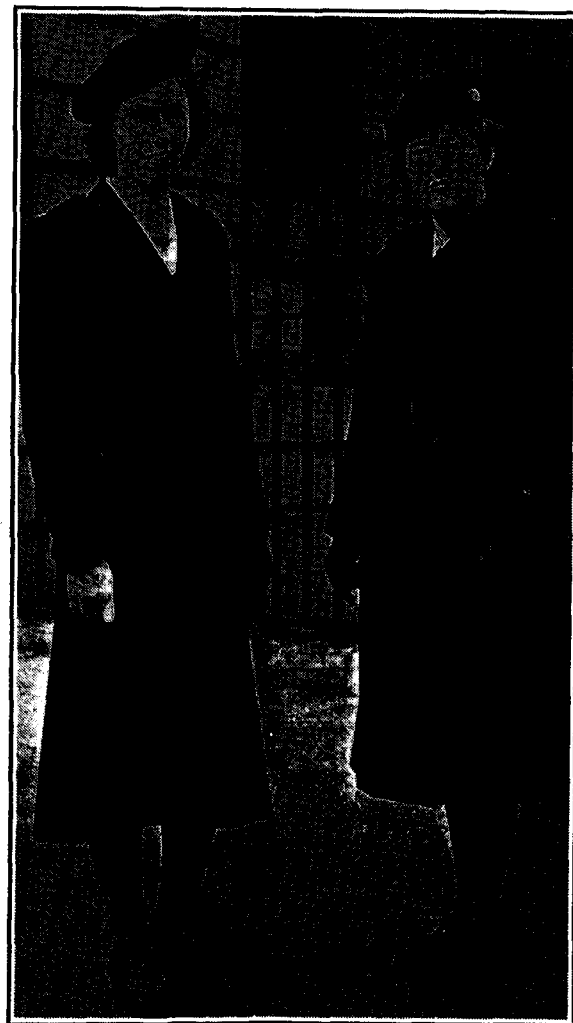
serge; and navy cheviot is used for the heavy coats; double-breasted, lancer front, neck flat, five buttons at 5½ inches apart, worn buttoned to the throat, or open to the third button; detachable epaulettes; loop at sleeve, head and screw button with S.R.N., R.M.N., R.N.M.D., R.S.C.N. or R.F.N. plated metal letters; sleeves are plain coat style; two cross-flap pockets and one inside pocket; and inverted pleat, or vent at back if preferred, six inches down from waist. All-round 2-inch wide belt with leather covered slide and cloth loop.

Costumes are made in men's navy suiting serge, single-



S.R.N. Washing Dress with Cap and Apron.

S.R.N. Mess Dress, no Cap or Apron.



S.R.N. Costume and Beret.

S.R.N. Overcoat and Tricorne Hat.

Uniform Committee, ended three years' exhaustive research, to arrive at uniform designs for all occasions.

No State Registered Nurse is obliged to wear the uniform, it is merely a matter of taste, and is only worn if hospital or employer have no established uniform of their own.

The uniform designed for State Registered Nurses must only be worn by them, and if the uniform is adopted, must be worn in its entirety.

The colours agreed for State Registered Nurses are navy blue and Cambridge blue, every part of the uniform being smart and serviceable.

Lightweight Overcoats are made in men's navy suiting

fronted jackets, four buttons 3½ inches apart, over-shoulder seam, double-breasted lapels and darts at the waist. Detachable epaulettes with distinctive lettering in silver wire. There are two styles of skirt: (1) Four-piece, flared; (2) six-gored, flared.

The length of garment is determined by the wearer, but 14 inches from the ground is considered most suitable.

One blouse is in Cambridge blue wool, silk or cotton; straight yoke and plain panel front, fastened with three dark blue plain buttons, coat collar and revers, long sleeves with cuff fastened with two buttons, the back is plain with four darts at waist. *The second blouse* is designed in

[previous page](#)

[next page](#)